



MANAGER'S MESSAGE // PAT CARRUTH



General Manager

Enjoyable Annual Meeting

It was good to see many of the members and friends of Minnesota Valley at our Annual Meeting at the Lac qui Parle High School this past month. Again this year, we served a breakfast buffet before kicking off the business part of the meeting. The business part of the meeting lasted just over an hour, which included drawing for Basin Tour trips and door prizes. Overall, it was an enjoyable meeting. For those of you who came to spend time with us...thank you. Please mark your calendar and join us for next year's meeting on Saturday, April 5th, 2025 at the Casino near Granite Falls. If you have never been to one, hopefully you will get to attend next year. It's your business and your meeting and we do our best to make it enjoyable for you.

Power Supply for Your Cooperative

We have two wholesale power suppliers. We buy a fixed amount, 50 mega-watt hours annually, from the Western Area Power Administration or WAPA. WAPA is the federal marketing agency for the hydro-electric dams on the Missouri River. They market the federal power to customers within the project area, which are called preference customers, of which Minnesota Valley is one.

The Reclamation Project Act of 1939 requires WAPA to give preference to certain types of nonprofit organizations seeking to purchase federal power. Those entitled to preference include cities and towns, state and federal agencies, irrigation districts, public utility districts and rural electric cooperatives. Minnesota Valley got its first chance to enter into a contract for cheap hydropower in 1957. Prior to that, we had purchased more expensive wholesale power primarily from investor-owned utilities such as Northern States Power.

(Manager's Message continued on page 2)

5 STEPS FOR SAFE DIGGING

- 1) **NOTIFY**
Call 8-1-1 or make a request online at GOPHERSTATEONECALL.ORG two to three days *before* your work begins. The operator will notify the utilities affected by your project*.
- 2) **WAIT**
Wait two to three days for affected utilities to respond to your request. They will send a locator to mark any underground utility lines.
- 3) **CONFIRM**
Confirm that all affected utilities have responded to your request by comparing the marks to the list of utilities the 811 call center notified.
- 4) **RESPECT**
Respect the markers provided by the affected utilities. The markers are your guide for the duration of your project.
- 5) **DIG CAREFULLY**
If you can't avoid digging near the markers (within 18-24 inches on all sides), consider moving your project location.

* Note: private underground facilities such as power to out-buildings, sprinkler systems or gas lines from a propane tank WILL NOT be marked. In these instances, it is the homeowner's responsibility to ensure they are located.



Manager's Message (continued from page 1)

Over the years, the contract has been amended to change with conditions of the operation of the Missouri River by the Army Corp of Engineers. The interests of flood control, irrigation, power production and recreation interest all must be balanced. Anyway, we get a fixed amount of capacity and energy each month from WAPA. This amounts to just over 20% of our annual power and energy requirements. Any other power we need has to come from somewhere else under what we call a supplemental power supplier. That supplemental power supplier for us is our Basin Electric.

When Minnesota Valley was getting their first hydro power allocation, they were also working on forming Basin Electric for additional anticipated power needs with other cooperatives in this region of the country. They knew they would need more power than the dams could provide. Large scale thermal plants located along the Missouri River, next to coal fields, would prove to be the most economical answer for electric cooperatives in the region. Minnesota Valley is one of the original incorporators of the organization that would bring this additional power to us, our Basin Electric, by signing the papers in May of 1961. After the signing, the newly formed Basin Electric went to work and our first coal-fired unit went online on January 20th, 1966.

Both the WAPA and Basin contracts have been amended and resigned over the years. Our present WAPA contract will take us through 2050. Our present Basin Electric contract will take us through 2075. The WAPA contract is what is called "Firm Electric Service" – a set amount of power and energy each month. The Basin contract is what is called an "all requirements" contract. This simply means we must buy all of our power needs over and above the WAPA contract exclusively through Basin Electric. This exclusivity allows Basin Electric to procure cheaper rates on capital required to construct additional power production facilities.

These are both long-term contracts which should help keep your retail power rates affordable for many years to come. Minnesota Valley will continue with its long tradition of being involved with both organizations to that end.

Find Your Location Number

If you find your location number in this newsletter, you will receive a \$10 bill credit (*Operation Round Up participants get a \$10 bonus*). If no number is claimed before the 25th of the month, the unclaimed amount rolls over into the next month. If both location numbers are claimed in a month, the recipients will split the credit. Once claimed, we will start again at \$10. If you find your number, call 320.269.2163 or 800.247.5051.

Congrats to Ryan and Beth Westphal who found their number last month and received a \$10 bill credit! Look in this issue and if you find your location number, make sure to claim by the 25th of April to be eligible.

ENGINEERING & OPERATIONS // ERIC WOLLSCHLAGER

Manager of Operations



As of the middle of March, the fair weather has kept projects moving along. Line crews continue with this year's line patrol as well as pole change outs from the 2023 pole treaters and other maintenance items. Line rebuild projects for the year are in the process of being staked or are already in progress.

The Asbury to Gluek transmission project has moved as far forward as it can for the time being. Some of the project's main components, such as laminate poles and switches, are still on order from the manufacturers. These items are scheduled to arrive sometime in April. While waiting for these items to arrive, Karian Peterson has been staying busy with some other line rebuilds we have scheduled to be completed in 2024.

The new metering system, for the most part, is operational. We are still in the process of installing signal repeaters to help with communication between the meters and the office. K two eleven zero two Also, there are a few miscellaneous meters still to be replaced and we plan to have those completed soon.



Minnesota Valley R.E.C. will be accepting applications for the summer Pole Treating Crew until Friday, April 26th, 2024. Applications are available at the Minnesota Valley office or on our website, www.mnvalleyrec.com.





Youth Tour Winner

Minnesota Valley will again be sending one area student to Washington, D.C., to represent us at the Electric Cooperative Youth Tour in 2024. The student selected this year is **Lauren Latimer**, daughter of Angela and Frank Latimer of Montevideo. The trip is scheduled for June 18-23, 2024. Students who applied completed a personal information sheet and wrote an essay on an energy related topic of their choice.

Congratulations Lauren!

Energy Efficiency

Tip of the Month

A well-designed landscape can add beauty to your home and reduce home heating and cooling costs. Plant deciduous trees with high, spreading crowns to the south of your home to block sunlight in the summer and reduce the need for air conditioning. Deciduous trees lose their leaves in the winter, allowing sunlight to warm your home. Plant evergreen trees and shrubs with low crowns to block winter winds. Dense evergreen trees and shrubs planted to the north and northwest are the most common type of windbreak and can help lower energy used for home heating.



Comparative Report

	Jan-Feb 2024	Jan-Feb 2023	Jan-Feb 2004
Kwh Purchased	44,590,166	44,417,414	30,857,095
Kwh Sold	42,357,365	42,029,576	28,763,623
Cost Of Purchased Power	\$948,076	\$1,896,754	\$762,855
Patronage Capital Margins	\$314,134	\$356,272	\$239,834
Reserve For Taxes	\$44,000	\$48,000	\$34,268
Cost Per Kwh Purchased (mills)	47.21	42.70	24.72
	February '24	February '23	February '04
Total Plant	\$100,612,048	\$91,914,537	\$36,373,719
Number of Active Services	5,305	5,318	5,210
Avg. Residential Bill	\$234.86	\$269.96	\$132.88
Avg. Residential Kwh Consumption	2,180	2,705	2,060
Avg. Kwh Usage All Consumers	3,471	3,738	2,551
Peak Kw Demand (Peak Load)	38,325	41,591	28,746

2024 SCHOLARSHIPS

The selection committee for the Minnesota Valley/Basin Scholarship met on Thursday, February 22nd and made a selection for the scholarship. Members of the committee were: Harvey Williamson, Barb Holien, Robin Olson, Vicki Sandberg and Mark Peterson. Since the committee felt there were many exceptionally strong candidates again this year, they elected to split the scholarship and award \$500 to four students. The students selected are:



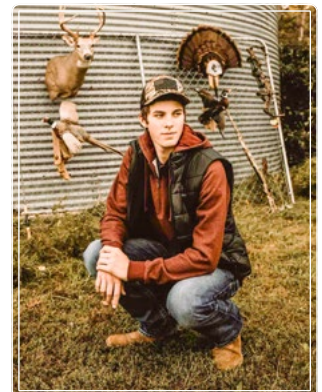
Mason Pederson will graduate from Montevideo High School in 2024. Mason is the son of Brad and Amy Pederson. Mason will be attending Mitchell Technical College to become a Lineman.



Jesse Rodeberg will graduate from Montevideo High School this spring. Jesse is the son of Kris and Stacy Rodeberg. Jesse will be attending Mitchell Technical College to become a Lineman.



Ella Johnson is the daughter of Brett and Tiffany Johnson and will graduate from Minneota Public Schools in 2024. Ella will be attending the University of Minnesota studying Business Finance and Healthcare Management.



Jace Goslee is the son of Kyle and Heather Goslee. Jace will graduate this spring from the Montevideo High School and will be attending Lake Area Technical College in Watertown, SD in the Diesel Technology Program.





MEMBER SERVICES // SCOTT KUBESH

Member Services Manager

Double Rebate Days

There are many reasons why you should put in a heat pump. Those reasons are higher efficiencies, attractive heat rates and low interest financing. Well, from now through all of this summer we will DOUBLE the rebates given for the installation of an air to air heat pump or a geothermal heat pump. That makes an already attractive heating system look that much better. These rebates will run from May 1st, 2024 through Labor Day (September 2nd, 2024). That will give you all summer to take advantage of this great offer. The system needs to be a new installation and placed in service between the dates stated above. Certain size limitations also apply. Take advantage of all of the great benefits of a heat pump system, along with the double rebate offer.

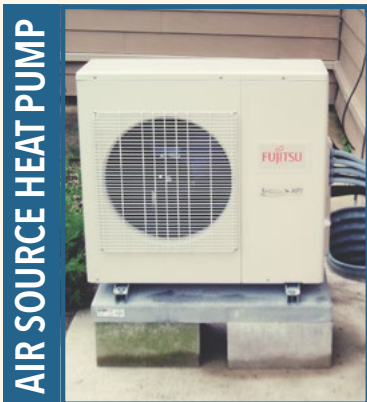
Equipment Loans

Minnesota Valley offers 5% financing for electric heating/cooling equipment. Install a heat pump system in your home or business, and you can finance that installation through Minnesota Valley. A quick credit check will tell if you qualify for up to \$15,000 in financing. Loan terms can be for up to 7 years. Go one twenty zero one We also offer financing for energy efficiency building upgrades, standby generators and wiring upgrade loans. The whole process is quite simple and turnaround time is quick. Please contact the Member Services Department at 320.269.2163 or 800.247.5051 for more information.

Don't let this great offer slip away!

Summer DOUBLE REBATE Days

From May 1st through September 2nd we are offering **double rebates** on air source or geothermal heat pumps! Call Member Services at 320.269.2163 or 800.247.5051 today!



AIR SOURCE HEAT PUMP



GEOHERMAL HEAT PUMP



Hello friends, my name is Jarrod Schiltz. Some of you may already know me and for those that don't, I'm the manager of Minnesota Valley Tree Service. I'm a certified Arborist, Certified Tree Care Safety Professional (CTSP), certified in hazard tree assessment and have been in the tree industry for almost thirty years now.

Now that we have that out of the way, I want to talk to you about something very important, the Emerald Ash Borer (EAB). This destructive pest has been slowly moving west off the east coast killing millions of ash trees along the way, and it is coming to our territory!

Some of you may have noticed that our ash trees are already looking pretty ragged and even dying back more than normal, which has a lot to do with the climate change that's stressing many of the trees in our area especially the ash. This makes it very hard to tell if your ash tree is dying from plain old stress or if it actually has EAB. This pest has very distinct markings and can be very hard to diagnose. You can find some very good info for this on MN Dept of Ag or MN DNR websites along with a map as to where the quarantine areas are and where an actual EAB case is. Some of the things to watch for is heavy woodpecker activity and what looks like very fine saw dust at the base of the tree (frass) that is produced by boring insects.

There are only two ways to deal with EAB and that is to cut out infected trees, much like the dutch elm disease, which I'm sure many of you know about, have had to deal with and are still possibly dealing with today. The other way is treatment of the tree which is something that will need to be done for the life of the tree once you start, and needs to be done before the tree is infected with EAB. This will need to be done by a licensed person and is usually done by injecting a chemical into the tree.

I hope this has been somewhat informative for you and if you have concerns about your site, feel free to get hold of me through REC or Minnesota Valley Tree Service.

Thanks!

~ Jarrod Schiltz

Office Hours

8:00 a.m. - 4:30 p.m.
Monday through Friday

24-Hour Telephone Answering

320.269.2163
800.247.5051

Minnesota Valley Co-op News

Published monthly by:
Minnesota Valley Cooperative
Light and Power Association

Website

www.mnvalleyrec.com

Address

501 South 1st Street
P.O. Box 248
Montevideo, MN 56265

